



Dataloggers



Temperature • Humidity • Current • Voltage • Light





Kistock NEW RANGE



HVAC

p.04



Laboratories

p.07



Food industry

p.08

Dataloggers

Temperature / Humidity / Current / Voltage / Light



1 Configure



Easy, user-friendly configuration with **KISTOCK** software. USB 2.0 connection.

2 Measure/Record



Install the **KISTOCK** and required probes to **measure** and **store** data.

3 Download



Connect **KISTOCK** or **KNT** Data recorder to your PC and download all measurements in a **few seconds**.

4 Process/Print/Save



Fast, easy analysis of your measurement data using graphs and tables built thanks to **KISTOCK** software.

Data processing software **KILOG**

Configuration of dataloggers

In **3 steps**, easily configure:

- your instrument
- your channels
- your recording



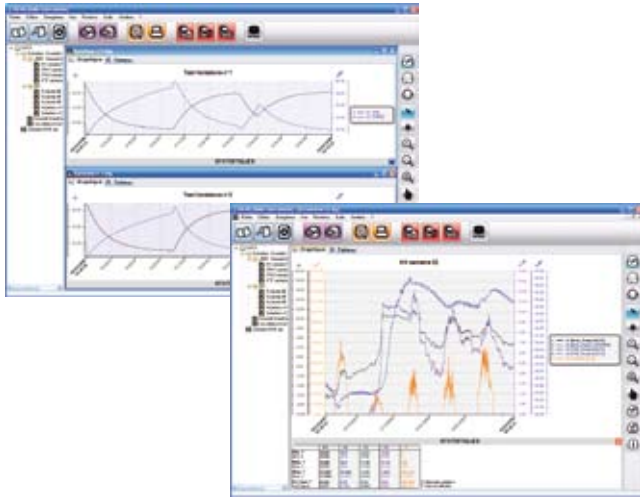
Data download

1 click and you can quickly download data from your **KISTOCK** or from the **KNT** data recorder.

- **automatic** save
- **archive** storage

Data processing

- creation of **graphs** and **tables**
- **automatic** calculations
- add calculation **functions**
- **export data** to a spreadsheet



KILOG CFR Data security

KILOG CFR is the **key software** for users who require traceability under the strict standards of **21 CFR part 11** standard. Security and integrity of **data** are **guaranteed** - no possibility to modify or tamper with data.



KILOG & KILOG CFR softwares are compatible with the former KISTOCK range.

Kistock **ACCESSORIES**

Printer

for KNT data recorder

KNT data collector

for mobile data transfer

Anti-theft system

wall-mounting bracket



EN 12830 norm

KT 150 and **KT 250**, models dedicated to food industry, meet with requirements of **EN 12830 norm**. This certification is required for transportation, storage and distribution of refrigerated, frozen and deep-frozen food, and ice cream (see page 8-9).

Certification is done by an independent laboratory, **COFRAC** accredited.





Range for HVAC

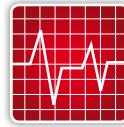
Class 110 Dataloggers

Easy use

Up to 3 parameters



1 line display or without display



Up to 16,000 record points



Temperature

Current/Voltage/Ammeter clamps



KT 110 I (internal measurement)

KT 110 A (internal measurement + 1 input for external probe)

Internal sensor

Temperature -40 to +70°C
Resolution 0.1°C

Memory

KT 110 I 12,000 pts
KT 110 A 16,000 pts



Humidity, temperature & light

KH 110 A (internal measurement)

Internal sensors

Humidity 5 to 95 %RH
Resolution 0.1 %RH

Light 0 to 10,000 lux
Resolution 1 lux

Temperature -20 to +70°C
Resolution 0.1°C

Memory 16,000 pts



Magnetic mounting



Range for HVAC



Class 210 Dataloggers



2-line display
or without display



20,000
record points

Multi-probe

Up to 5 parameters

Up to 4 external inputs



Temperature

Current/Voltage/Ammeter clamps



KT 210 A (internal measurement + 4 inputs for external probes)

Internal sensor

Temperature -40 to +70°C
Resolution 0.1°C



Humidity, temperature & light

Current/Voltage/Ammeter clamps

KH 210 A (internal measurement + 2 inputs for external probes)

KH 210 D (remote probe + 2 inputs for external probes)

Internal sensor

Humidity 5 to 95 %RH
Resolution 0.1 %RH

Temperature -20 to +70°C
Resolution 0.1°C

Light 0 to 10,000 lux
Resolution 1 lux

Remote probe

Humidity 5 to 95 %RH
Resolution 0.1 %RH

Temperature -20 to +80°C
Resolution 0.1°C





Range for HVAC

Class 310 Datalogger

Multi-probe

2 thermocouple external inputs



2-line display



100,000 record points



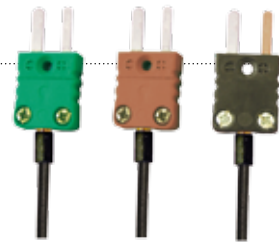
Thermocouple temperature



KTT 310 (2 inputs for external probes)

Thermocouple temperature

- K -200 to +1,000°C
- J -100 to +750°C
- T -200 to +400°C
- Resolution 0.1°C



To prevent legionnaire's disease

Check of hot water Sanitary network



With **Velcro probes** or **spring clamp probes**, KTT 310 is a key instrument to control and monitor your **hot water / sanitary network**.



Thermometer Function

In addition to its datalogging function, KTT 310 allows you to perform **on-demand display of measurements**.

Range for Laboratories



Class 350 Dataloggers

Multi-probe

Pt 100 temperature probes

Up to 4 parameters



2-line display



100,000 record points



Pt 100 temperature
Current/Voltage/Ammeter clamps



KTR 350 (2 inputs for external probes)

Pt 100 remote probes
Temperature -100 to +400°C
Resolution 0.1°C

Thermometer Function



Humidity & Pt 100 temperature
Current/Voltage/Ammeter clamps

- KTH 350 A** (internal measurement + 1 input for external probe)
- KTH 350 P** (2 inputs for external probes - supplied with polycarbonate probe)
- KTH 350 I** (2 inputs for external probes - supplied with stainless steel probe)

Internal sensors

Humidity 0 to 100 %RH
Resolution 0.1 %RH

Temperature -20 to +70°C
Resolution 0.1°C

Stainless steel remote probe

Humidity 0 to 100 %RH
Temperature -40 to +180°C

Polycarbonate remote probe

Humidity 0 to 100 %RH
Temperature -20 to +120°C



Thermo-hygrometer Function



Range for Food industry

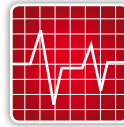
Class 150 Dataloggers

Easy use

Up to 3 parameters



1 line display or without display



Up to 16,000 record points



Temperature

Current/Voltage/Ammeter clamps

KT 150 I (internal measurement)

KT 150 A (internal measurement + 1 input for external probe)

Internal sensor

Temperature -40 to +70°C

Resolution 0.1°C

Memory

KT 150 I 12,000 pts

KT 150 A 16,000 pts



New



“Special long-time immersion” probes

see p.11



Mini temperature dataloggers



KT 20 G

Temperature -40 to +85°C

Memory 2,048 points

KT 20 T

Temperature 0 to +125°C

Memory 8,192 points

KT 20 L

Temperature -40 to +85°C

Memory 8,192 points

Range for Food industry



Class 250 Dataloggers

Multi-probe

Up to 5 parameters

Up to 4 external inputs



2-line display
or without display



20,000
record points



Temperature

Current/Voltage/Ammeter clamps



KT 250 I (internal measurement + 4 inputs for external probes)

Internal sensor

Temperature -40 to +70°C

Resolution 0.1°C



Humidity, temperature & light

Current/Voltage/Ammeter clamps

KH 250 A (internal measurement + 2 inputs for external probes)

Internal sensors

Humidity 5 to 95 %RH

Resolution 0.1 %RH

Light 0 to 10,000 lux

Resolution 1 lux

Temperature -20 to +70°C

Resolution 0.1°C





Probes



NTC temperature probes

For HVAC



Wire probes

KCF 2 N	Wire	PVC cable	-20 to +100°C
KCG 50 N	General use - stainless steel - 50 mm	PVC cable	-40 to +120°C
KCG 150 N	General use - stainless steel - 150 mm	PVC cable	-40 to +120°C
KCA 150 N	Ambient - stainless steel, perforated tip - 150 mm	PVC cable	-40 to +120°C
KCV 200 N	Velcro - length 200 mm	PVC cable	-20 to +90°C
KCP 150 N	Penetration - stainless steel - 150 mm	PVC cable	-40 to +120°C

With polycarbonate handle

KCG 150 PN	General use - stainless steel - 150 mm	PVC cable	-40 to +120°C
KCA 150 PN	Ambient - stainless steel, perforated tip - 150 mm	PVC cable	-40 to +120°C
KCP 150 PN	Penetration - stainless steel - 150 mm	PVC cable	-40 to +120°C

Current & voltage input cables

KGTJ 10 N	Voltage input cable	PVC cable	0 to 10 V
KCCJ 02 N	Current input cable	PVC cable	0 to 20 mA

Ammeter clamps

KPIJ xx N	Ammeter clamps	PVC cable	0 to 600 A
------------------	----------------	-----------	------------

For a wider choice of thermocouple probes for class 310 please contact us.



waterproof : splash proof



waterproof : long-time immersion

Pt 100 probes For laboratories



Wires

KRGA 50	General use - stainless steel - 50 mm	IP 65	Teflon® cable	-50 to +250°C
KRGA 150	General use - stainless steel - 150 mm	IP 65	Teflon® cable	-50 to +250°C
KRAM 150	Ambient - stainless steel, perforated tip - 150 mm		Teflon® cable	-40 to +120°C
KRVB 200	Velcro - length 200 mm		Teflon® cable	-20 to +90°C
KRPA 150	Penetration - stainless steel - 150 mm	IP 65	Teflon® cable	-50 to +250°C

With stainless steel handle

KPI3 150	Penetration - stainless steel - 150 mm	IP 65/68	Teflon® cable	-50 to +250°C
KPIC3 150	Bent penetration - stainless steel - 150 mm	IP 65/68	Teflon® cable	-50 to +250°C
KT13 100	Penetration with T-handle - stainless steel - 100 mm	IP 65/68	Teflon® cable	-50 to +250°C
KTBI3 100	Corkscrew twist - stainless steel - 100 mm	IP 65/68	Teflon® cable	-50 to +250°C

Current & voltage input cables

KCTD 10 B	Voltage input cable	PVC cable	0 to 10 V
KCCD 02 B	Current input cable	PVC cable	0 to 20 mA

NTC probes - IP 65 For food industry



Wires

KCF 2 B	Wire		PVC cable	-20 to +100°C
KCG 50 B	General use - stainless steel - 50 mm	IP 65	PVC cable	-40 to +120°C
KCG 150 B	General use - stainless steel - 150 mm	IP 65	PVC cable	-40 to +120°C
KCA 150 B	Ambient - stainless steel, perforated tip - 150 mm		PVC cable	-40 to +120°C
KCV 200 B	Velcro - length 200 mm		PVC cable	-20 to +90°C
KCP 150 B	Penetration - stainless steel - 150 mm	IP 65	PVC cable	-40 to +120°C

With stainless steel handle

KPI 150	Penetration - stainless steel - 150 mm	IP 65/68	PVC cable	-40 to +120°C
KPIC 150	Bent penetration - stainless steel - 150 mm	IP 65/68	PVC cable	-40 to +120°C
KPTI 100	Penetration with T-handle - stainless steel - 100 mm	IP 65/68	PVC cable	-40 to +120°C
KPTBI 100	Corkscrew twist - stainless steel - 100 mm	IP 65/68	PVC cable	-40 to +120°C

Current & voltage input cables

KCTJ 10 N	Voltage input cable	PVC cable	0 to 10 V
KCCJ 02 N	Current input cable	PVC cable	0 to 20 mA

Distributed by :

BSRIA Instrument Solutions

Tel No. 01344 459314

www.bis.fm



KIMO - Export Department
Boulevard de Beaubourg - BP 48
Emerainville - F-77312 MARNE LA VALLEE Cedex 2 - France
Tél. : +33 (0)1 60 06 69 25 - Fax : +33 (0)1 60 06 69 29
Email : export@kimo.fr

www.kimo.fr